



保良局婦女庇護中心  
Po Leung Kuk Refuge Centres for Women



Emergency Accommodation Project  
for Young Girls

# 青少女 緊急 住宿計劃



## 對象 Targets

1 面對家庭關係問題或遭遇家庭暴力的13-17歲青少女；及  
Young girls aged from 13-17 who are facing family relationship problem or are experiencing domestic violence; and

2 精神及情緒穩定，具基本自理能力(包括自行處理膳食及洗衣)

Mentally and emotionally stable, with basic self-care skills (including meal preparation and doing laundry)

## 申請方法 Service Application

- 須由機構社工轉介及取得監護人同意。(特殊情況酌情處理)

All referrals should be made by agency social workers with parental consent. (Discretion on special cases)

- 入宿當天，須由轉介社工陪同前往中心辦理入住手續。

On the admission day, the referring social worker should escort the service user to the shelter to complete the admission procedure.



## 住宿期 Period of Stay

按需要定為2星期至3個月  
Typically 2 weeks to 3 months depending on needs.

## 退出方法 Service withdrawal

經雙方協議，服務使用者及負責社工均可提出退出服務的要求。

Based on mutual agreement, service users and their social workers can request for termination of service.



社會福利署資助服務  
Subsidised Service by the Social Welfare Department

## 入住期間，青少年可以得到的支援：

During the stay at the shelter, the young girl can receive the following support:

一個舒緩壓力的  
空間及適當的陪伴；  
A relaxing space with  
appropriate company;

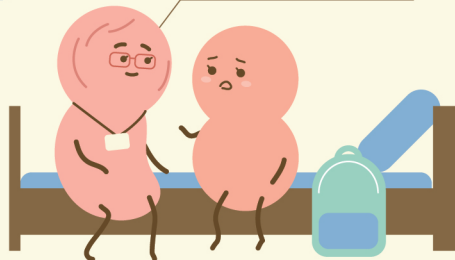


由專業社工細心聆聽需要，  
一起尋求解決問題的方法；

Meetings with professional social  
workers, who listen to the needs  
and help finding solutions to  
problems; and

透過住宿照顧服務，實踐  
生活技能及建立關懷網絡。

Enhancement of life  
skills and establishment  
of a support network.



## 費用 Fee



住宿及一般活動免費，  
膳食、交通及其他生活  
支出由監護人負責。

Free accommodation and basic activities.  
However, the guardians of the service  
user should be paying for meals,  
transportation and personal expenses.

24小時熱線 24-Hour Hotline  
**81001155**



6670 6700

提供非緊急服務資訊  
For non-urgent enquiries only

詳細服務內容可參閱  
保良局婦女庇護中心單張及網頁

Please refer to the service pamphlet and  
service website for more details

<http://womenrefuge.poleungkuk.org.hk>

